

# Earth Morning Knits



## The Shilling Hat

Named for a scene in the film *The King's Speech*, this hat has an old-fashioned style that you might find in 1930s London. Its alternating garter/stockinette stitch squares and purl-sandwiched cables look like knitted plaid. Shilling is knit on slightly smaller needles than usual, which makes this hat both snug and warm.



**EARTH  
MORNING**  
AN EVER-GROWING TINY ADVENTURE

## Earth Morning Knits - The Shilling Hat

earthmorning.org

This pattern is unisex and available for knitting flat and in the round. Instructions are given for child small (child medium, child large, adult small, adult large, adult XL).

For reference, the final dimensions of the adult XL hat are 22" around and 7.5" long. Please note that this hat sits very low on the forehead.

- 61g/135yd of Cascade 220 Heathers yarn or comparable worsted weight wool
- 1 set US size 4/UK size 3.5 knitting needles (flat if knitting flat, double pointed or circular if knitting in the round)
- 1 set US size 6/UK size 4 knitting needles (flat if knitting flat, double pointed or circular if knitting in the round)
- 1 cable needle
- 1 tapestry needle

### Gauge:

5 stitches per inch, 9 rows per inch.

### Abbreviations and Symbols:

k: knit

p: purl

k2tog: knit 2 stitches together

( )\*: repeat pattern in parentheses to end of row

p1, k1 ribbing: purl 1 stitch, knit 1 stitch, repeat previous two stitches to end of row

This pattern is free for your personal use, courtesy of Christine Terramane from Earth Morning (earthmorning.org). I would appreciate it if you would not use this pattern to knit some hats and sell them, though if you have any questions I would be happy to discuss them with you. You can contact me at [savvychristine@gmail.com](mailto:savvychristine@gmail.com).

**Body of hat:**

Switch to US size 6/UK size 4 needles and knit 4 rows as follows:

Row 2:  $(p5, k1, p3, k1)^*$

Row 3: repeat Row 1

Row 4: repeat Row 2

*You may omit these 4 rows if you would like the hat to sit ½" higher on the forehead.*

Begin chart. Work 2 full repeats of chart. Then work first 8 rows of third chart repeat.

**Decrease section:**

Row 9: (p1, k3, p1, k2tog, k1, k2tog)\*

Row 10:  $(p3, k1)^*$

Row 11:  $(p1, k2tog, k1)^*$

Row 12:  $(p2, k1)^*$

Row 13:  $(p1, k2tog)^*$ 

Row 14:  $(p1, k1)^*$

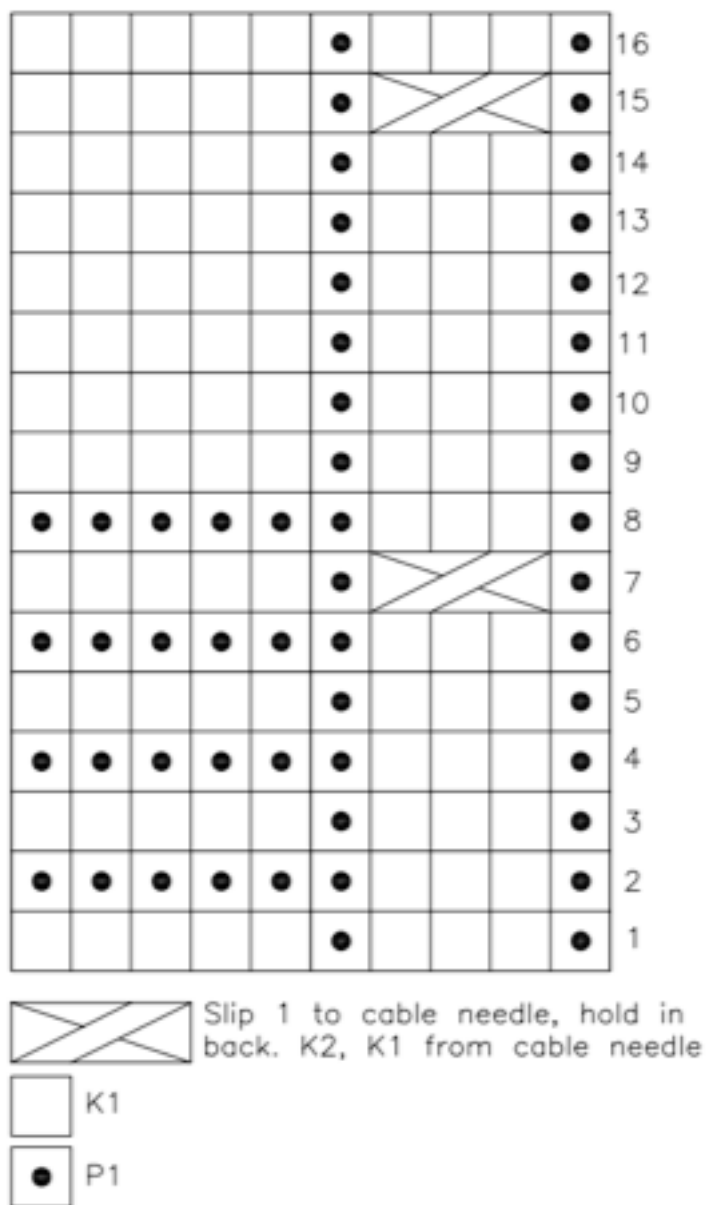
Row 15:  $(k2tog)^*$

Row 16: (p)\*

Row 17:  $(k2tog)^*$ 

Cut yarn with a 12"/30.5cm tail and thread through remaining stitches. Draw stitches tightly together, then use yarn tail to sew down the seam of the hat. The seam falls in a purl "ditch" on the right side of the hat, and should be nearly invisible. Tie off yarn and weave in ends.

*Fin.*



For knitting in the round:

### Body of hat:

Cast on 60 (70, 80, 90, 100, 110) stitches on US size 4/UK size 3.5 double pointed or circular needles. Join, being careful not to twist stitches. Beginning with a purl stitch, work p1, k1 ribbing for 12 rounds or about 1.5"/3.8cm.

Switch to US size 6/UK size 4 needles and knit the following pattern for 4 rows: (p1, k3, p1, k5)\*. *You may omit these 4 rows if you would like the hat to sit ½" higher on the forehead.*

Begin chart. Work 2 full repeats of chart. Then work first 8 rows of third chart repeat.

### Decrease section:

Working on double pointed needles

Row 9: (p1, k3, p1, k2tog, k1, k2tog)\*

Row 10: (p1, k3)\*

Row 11: (p1, k2tog, k1)\*

Row 12: (p1, k2)\*

Row 13: (p1, k2tog)\*

Row 14: (p1, k1)\*

Row 15: (k2tog)\*

Row 16: (k)\*

Row 17: (k2tog)\*

Cut yarn with a 6"/15cm tail and thread through remaining stitches. Draw stitches tightly together, tie off yarn, and weave in ends.

*Fin.*